

FIG. 113 BLOCK RETAINING WALL

Note : Do not use bricks for retaining.

vent holes every third perpend

70mm brick

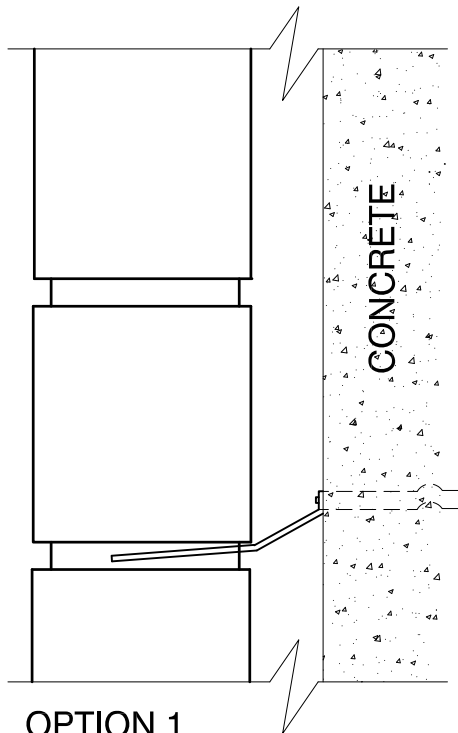
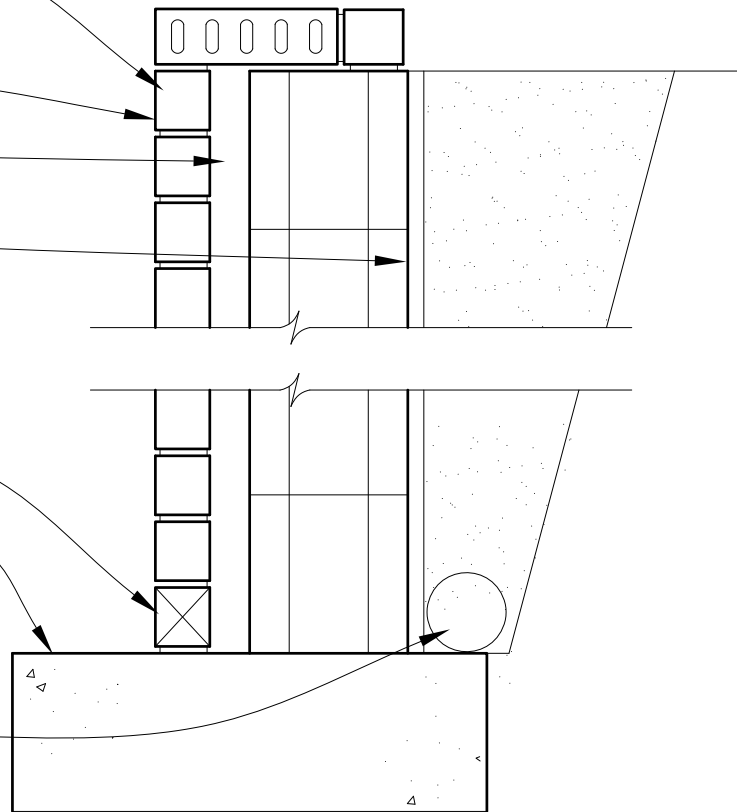
20 - 50mm cavity

Flintcote to rear of wall with scoria backfill

Weepholes

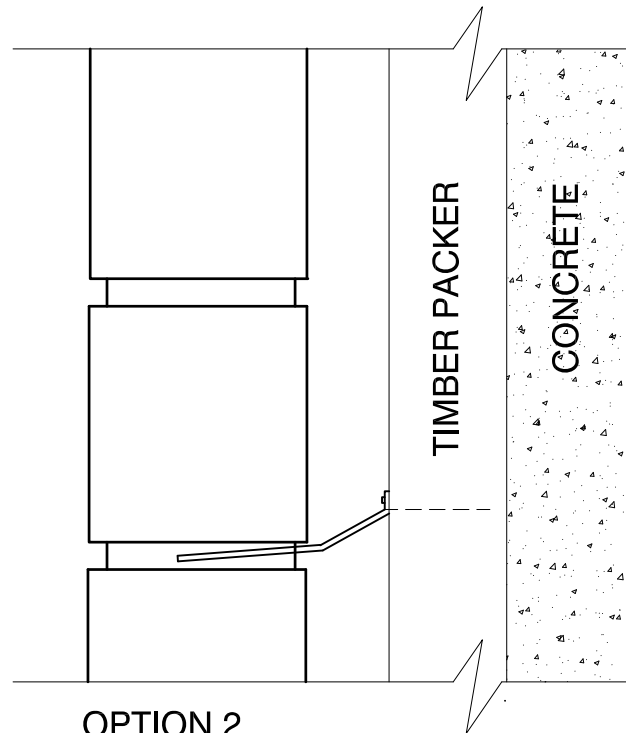
Block & concrete footing to be engineered

Sub-soil drain with filter cloth



OPTION 1

Using direct fixing to concrete
 Fixing - Rawlplug MH56MMSS
 5 x 38mm Spike or similar
 2 coats of bitumen emulsion
 to concrete. if required cut ties
 short and cold galvanise.
 Min. cavity 20mm
 Recommended cavity 40mm



OPTION 2

Using 40mm H3.2 timber packer
 Std. screw fixed ties cut short
 and cold galvanise if required.
 Min. cavity 60mm
 Recommended cavity 80mm