

# FIG. 66 WINDOW HEAD

## Brick Slips on Eterpan

STONE / BRICK SLIP SYSTEM

VENTCLAD SYSTEM

9mm Eterpan fixed at 150 crs with 60 x 2.8d ss clouts on Ventclad batten

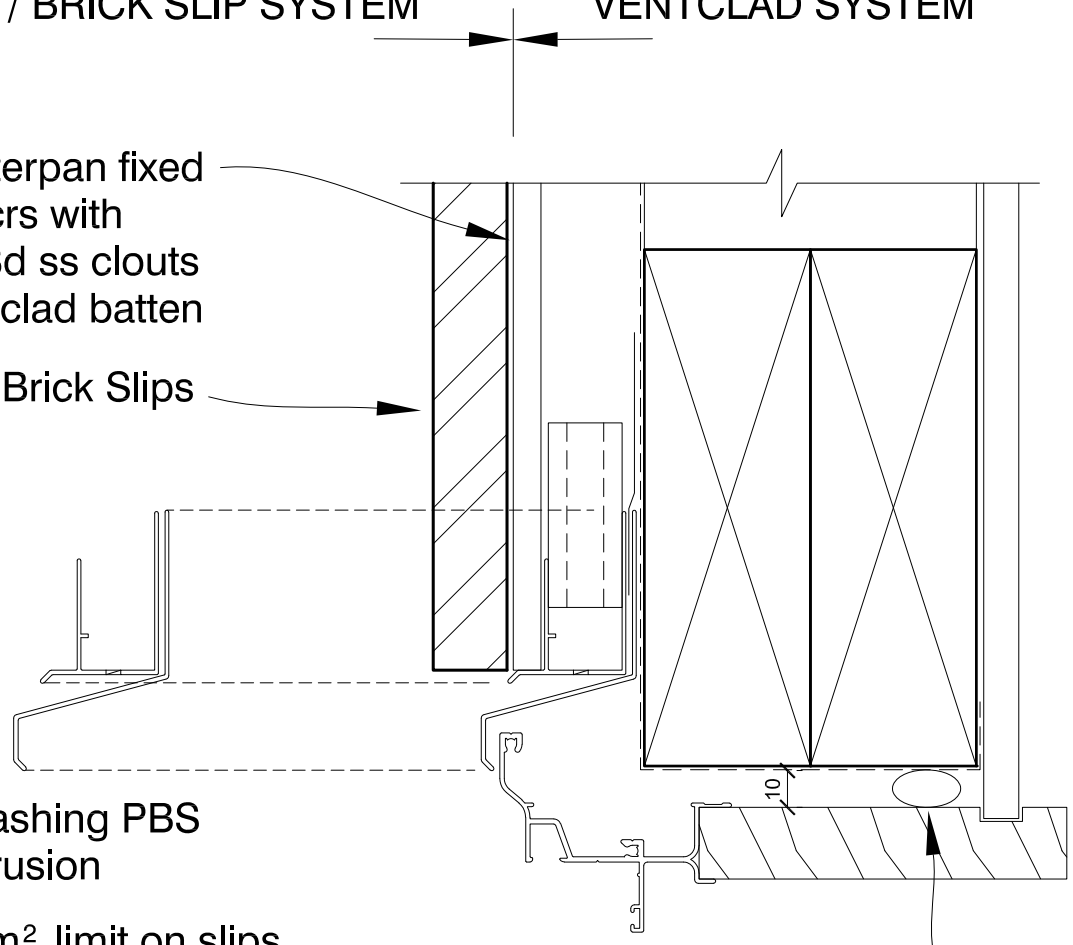
Stone / Brick Slips

Head flashing PBS pvc extrusion

50kg / m<sup>2</sup> limit on slips

Primer and fixing in accordance with stone / brick slips manufacturers recommendation

Air seal & flashing tape to reveal



Refer to [www.ventclad.co.nz](http://www.ventclad.co.nz) Detail no. VC.6.4.01 & 02